

PROPOSED PLAN

- 1 Main entry: Widened opening, new steel pivot gates, key pad for out of hours access, steel hood over
- 2 New entry vestibule, brick walls with marble tile finish, New timber doors through to main church space
- 3 New lightweight wall with glazed timber door and sidelight through to Confessional
- 4 New lightweight wall with fixed glass window to Adoration Chapel
- 5 New accessible toilet with airlock
- 6 New joinery with sink for use during flower preparation
- 7 New stairs up to raised platform, single handrail to meet access requirements
- 8 New marble Altar
- 9 New marble Tabernacle plinth
- 10 New icon of St Joseph & Our Lady. Feature artwork on ceiling over Tabernacle area
- 11 New compliant ramp
- 12 Floor finishes replaced and new paint finish throughout
- 13 Existing pews upgraded, new cushions
- 14 Relocated A/C condenser unit
- 15 Confessional: timber screen to divide space with acoustic window detail. Glazed painted timber door into confessional from entry vestibule
- 16 Prayer Space: Glazed entry door from entry vestibule



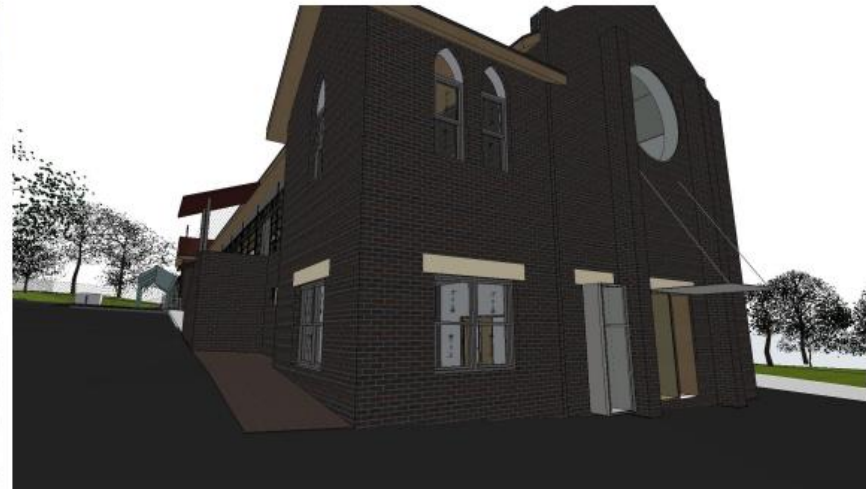
VIEW FROM MAIN APPROACH



SIDE ACCESS AND CARPARK



CHURCH ENTRY



LOWER GROUND ENTRY



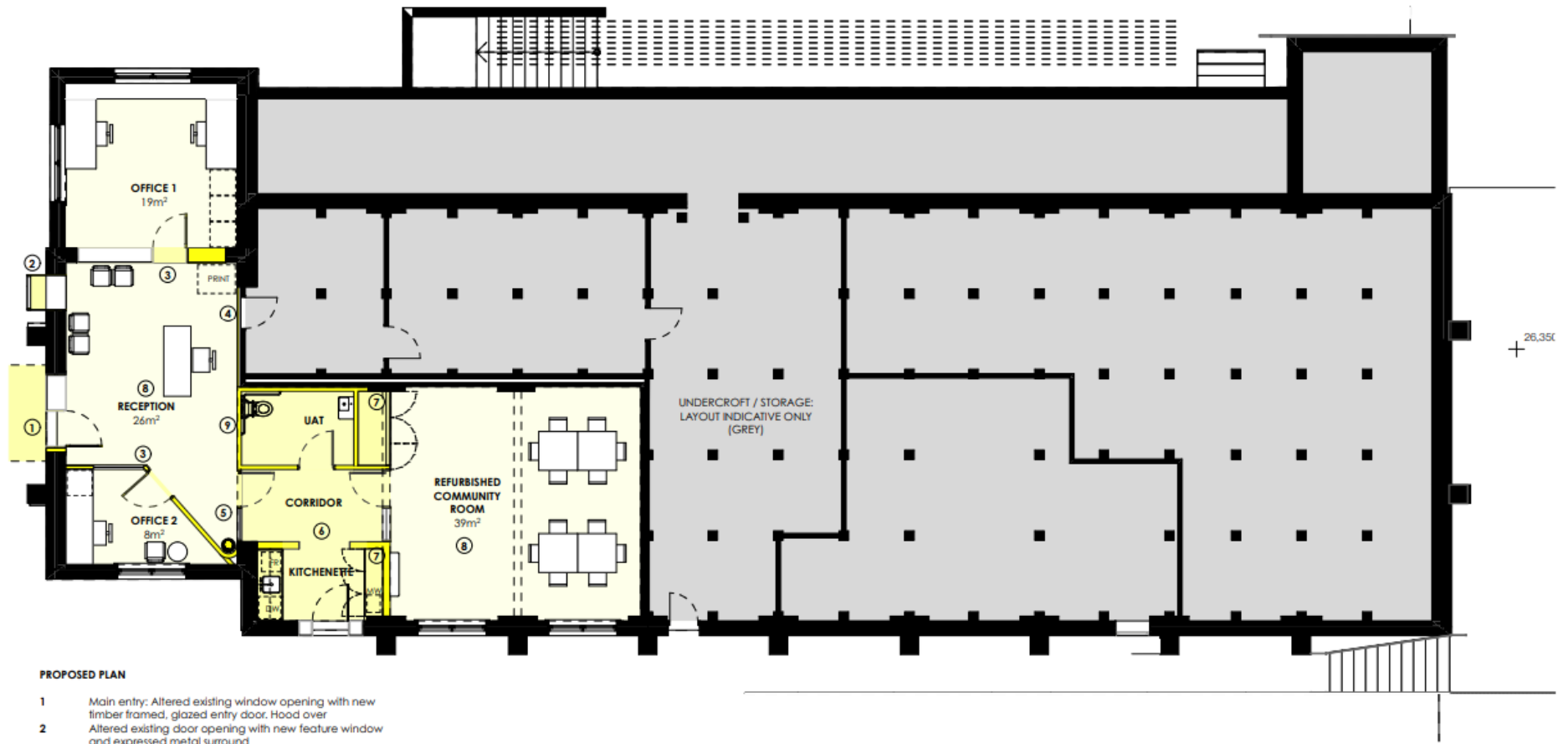
MAIN ENTRY



VIEW TOWARD CONFESSINAL



TOWARD SANCTUARY AND BAPTISMAL FONT



PROPOSED PLAN

- 1 Main entry: Altered existing window opening with new timber framed, glazed entry door. Hood over
- 2 Altered existing door opening with new feature window and expressed metal surround
- 3 Lightweight walls to offices with timber framed glazed doors and windows
- 4 Existing opening to basement covered over
- 5 Secure glazed doors into kitchenette / toilet / community room
- 6 New kitchen and bathroom area, closed off from community room and reception space
- 7 Full height storage cupboards
- 8 New floor finishes and paint throughout
- 9 Wall for display - notice board, artwork etc.